

## Specifications

**Model Number:** W355

**Interactive Water Effect:** Shall be one stream effect within the boundaries of the arch and one waterfall stream effect (per arch).

**Shaft:** 3" type 304 stainless steel pipe with full radius bend and machined type 304 base plate.

**Anchor Base:** Type 304 stainless steel machined to mate with shaft base plate with grounding connection and 2" FPT inlet. Supplied with 4, 3/8" x 12" x 2" 18/8 stainless steel anchor bolts with two leveling nuts and washers per bolt and wood pour template.

**Closed End Base:** Supplied with 2 stainless steel concrete anchors, 18/8 stainless steel tamper-resistant screws, and a threaded drain plug.

**Gasket:** 70 durometer EPDM o-ring.

**Fasteners:** Tamper-resistant 18/8 stainless steel.

**Finish:** Textured elastomeric urethane with a UV and chlorine resistant sealer coat.

**Color:** (Specify red, dark blue, light blue, yellow, green, orange, or purple.)

**Nozzles:**

**Optional Adders:**

**Wireless Activator Button (-SW)**

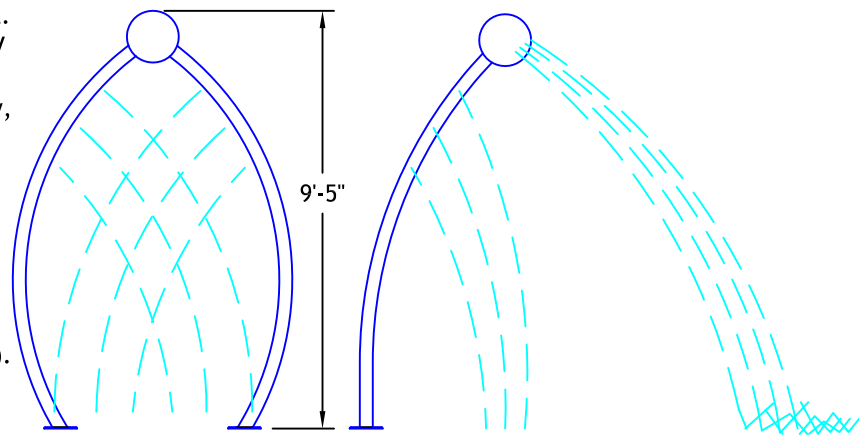
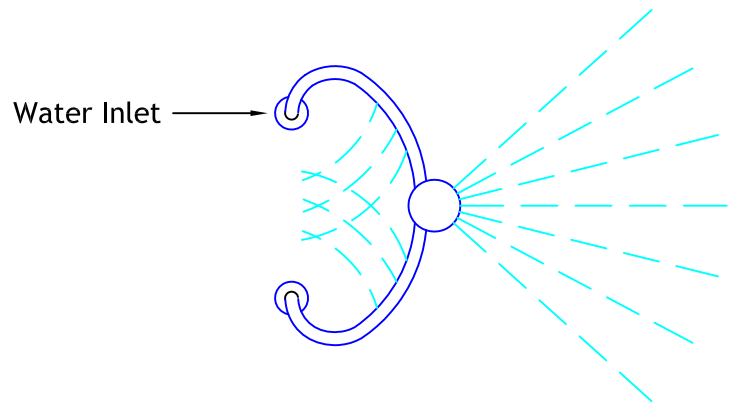
Transmitter: Solid state with encoded signal and integral omni-directional antenna.

Activator Power: 3 VDC lithium battery (CR2477).

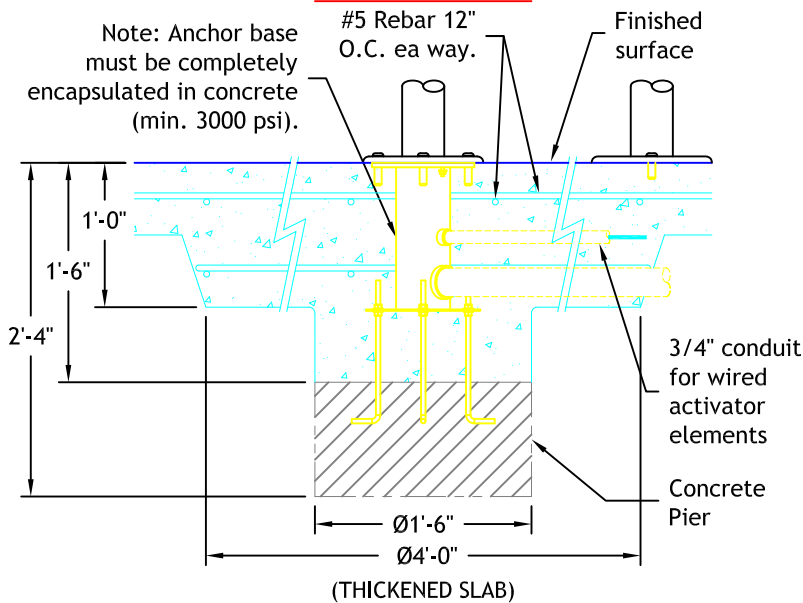
**Wired Activator Button (-ST)**

Activator Switch: 12 VDC.

Activator Cord: 150' of #18/2 type STOW, minimum 3/4" conduit recommended.



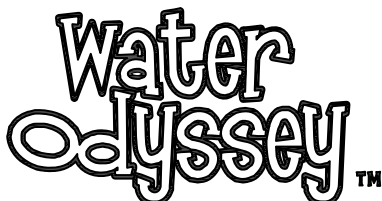
### Anchor Base



### Hydraulic Requirements

W355

| GPM | psi |
|-----|-----|
| 12  | 6   |



# Lotus Petal™

W355