

Specifications

Model Number: W215

Interactive Water Effect: Shall be misters from the underside of the Whale.

Shaft: 4" diameter type 304 stainless steel pipe with machined type 304 base plate.

Body and Fin: Type 304 stainless steel sheet .

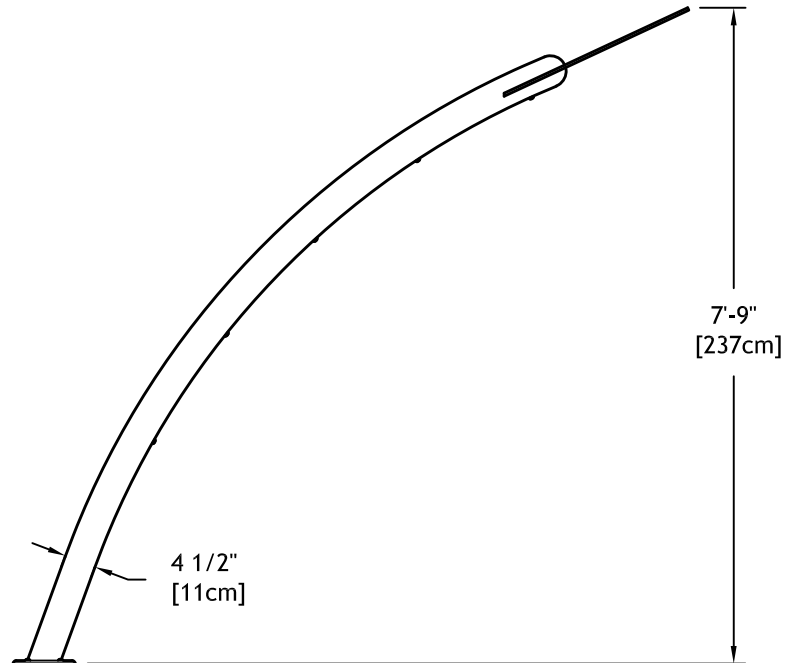
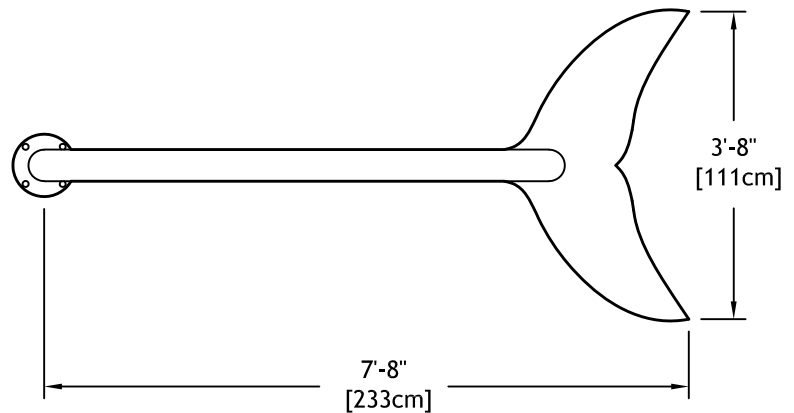
Anchor Base: Type 304 stainless steel machined to mate with shaft base plate includes grounding connection and 2" FPT inlet. Supplied with 4, 3/8" x 12" x 2" 18/8 stainless steel anchor bolts with two leveling nuts and washers per bolt and wood pour template.

Gasket: 70 durometer EPDM o-ring.

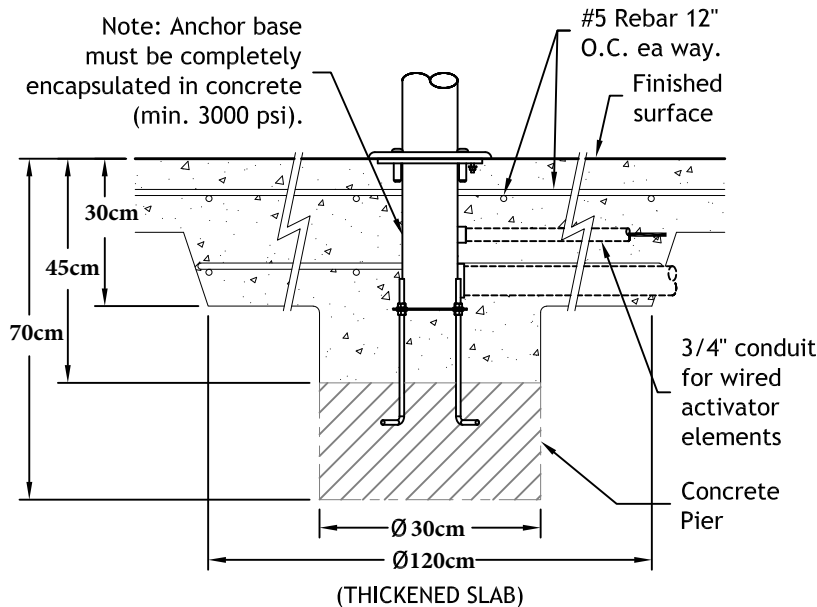
Fasteners: Tamper-resistant 18/8 stainless steel.

Finish: Textured elastomeric urethane with a UV and chlorine resistant sealer coat.

Nozzles: 5 machined brass mist jets.



Anchor Base



Hydraulic Requirements

□ W215

LPM	psi
38	20



Whale Tail Jr.™