

Specifications

Model Number: W049

Interactive Water Effect: Shall be an array of outward arching streams of water from the fluke and a spill effect from the stock.

Shank: 4" diameter type 304 stainless steel pipe with machined type 304 base plate.

Fluke and Stock: 2" diameter type 304 stainless steel pipe.

Anchor Base: Type 304 stainless steel machined to mate with shaft base plate with grounding connection and 2" FPT inlet. Supplied with 4, 3/8" x 12" x 2" anchor bolts with two leveling nuts and washers per bolt and wood pour template.

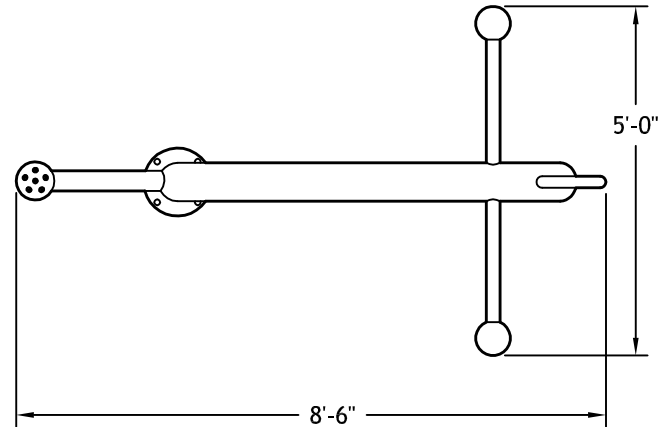
Gasket: 70 durometer EPDM o-ring.

Fasteners: Tamper-resistant 18/8 stainless steel.

Finish: Textured elastomeric urethane with a UV and chlorine resistant sealer coat.

Color: (Specify red, dark blue, light blue, yellow, green, orange, or purple.)

Nozzles: Precision machined brass precision jet cluster.



Optional Adders:

☐ **Wireless Activator Button (-SW)**

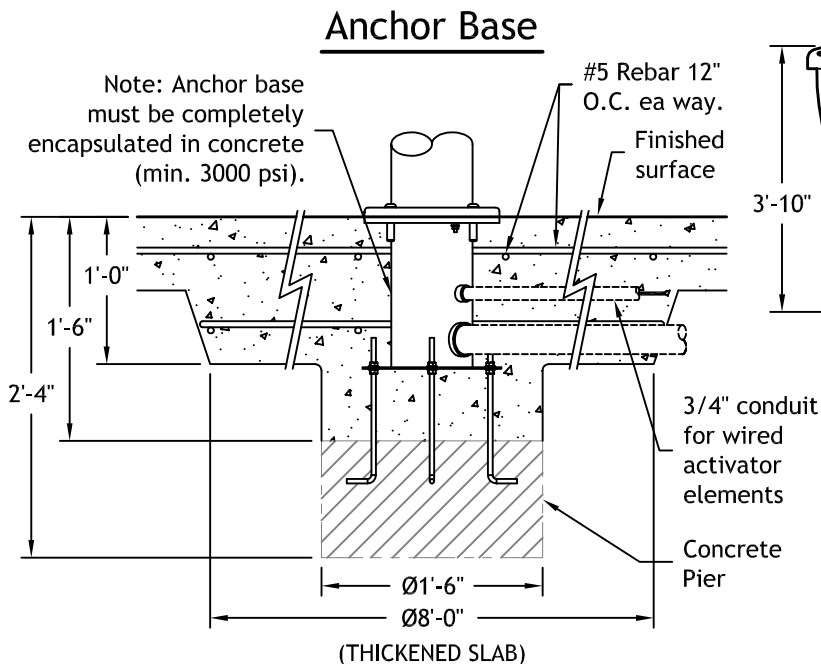
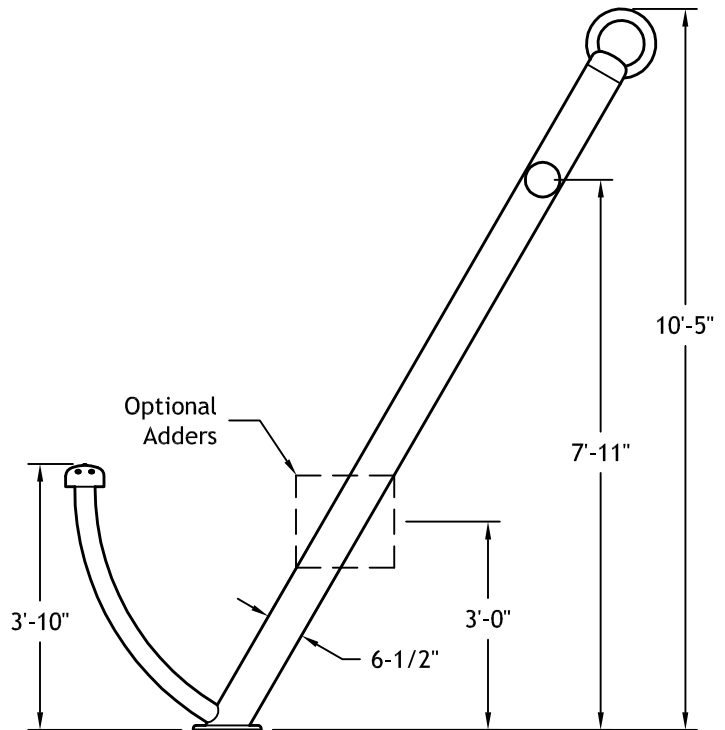
Transmitter: Solid state with encoded signal and integral omni-directional antenna.

Activator Power: 3 VDC lithium battery (CR2477).

☐ **Wired Activator Button (-ST)**

Activator Switch: 12 VDC.

Activator Cord: 150' of #18/2 type STOW,
minimum 3/4" conduit recommended.



Hydraulic Requirements

□ W049

GPM	psi
35-55	6

☐ *W049C - Water Conserving Version

*CGPM	*Cpsi
15-25	6

Water Odyssey™

Sea Anchor™

W049

Fountain People, Inc. ~ PO Box 807 ~ 4600 Highway 123 ~ San Marcos, Texas 78667-0807
Phone (512) 392-1155 ~ Fax (512) 392-1154 ~ www.waterodyssey.com

06-20-13